

Historic, Archive Document

Do not assume content reflects current scientific knowledge, policies, or practices.



62,39

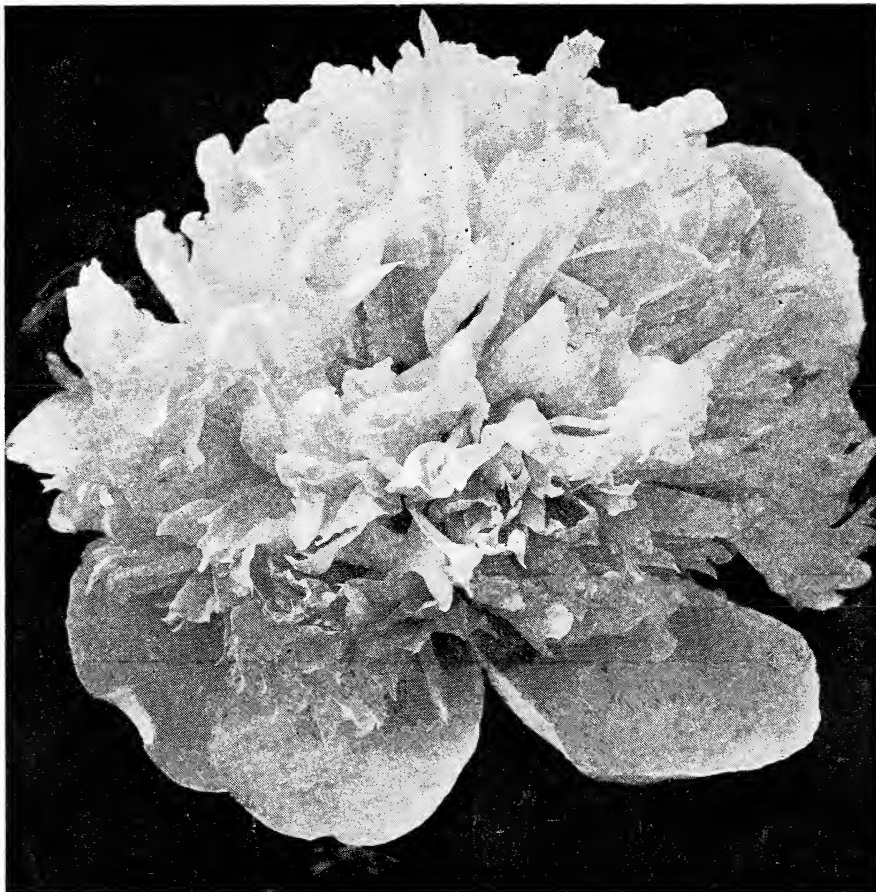
1883

LIBRARY
SEP 11 1928
U. S. Department of Agriculture

A GUIDE TO MAKING

—OF—

SPRING GARDENS



MARY BAKER EDDY—\$10.00 each See page 3

J. K. ALEXANDER

547-559 CENTRAL STREET

EAST BRIDGEWATER ∴ MASSACHUSETTS

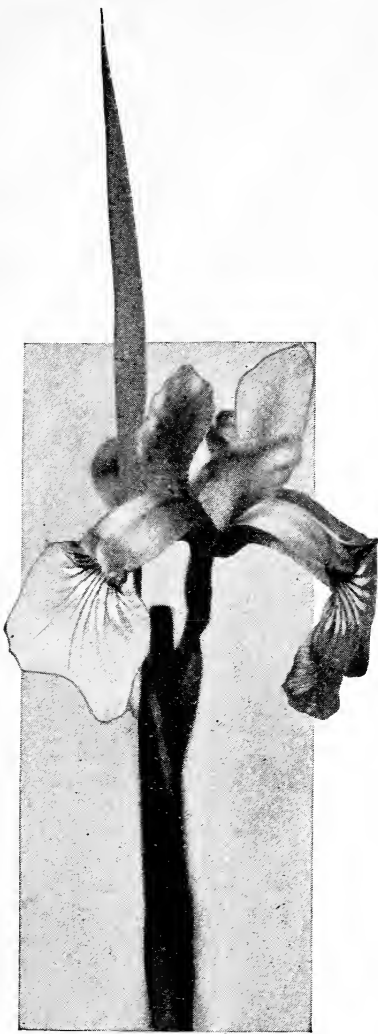


J. K. ALEXANDER

I print this not because I am proud of my own picture, but because most people like to see the man with whom they are doing business.

Announcement

In presenting you with my fourth Fall Catalog, I would like to have a few words with you; principally to assure you I will strive to serve you in the same satisfactory manner as I have for the past twenty-eight years. This Catalog is very modest compared to my Spring Catalog but has been made possible through your patronage. Through giving your orders my careful personal attention, I have been able to increase my business by leaps and bounds. Probably you can recall when my Spring Catalog contained nothing but Dahlias and Gladioli. Each year I have added to it.



Eight years ago, I purchased the entire stock of Peonies of George Hollis, the well-known Peony Specialist of South Weymouth, Mass. I came into possession of one of the most complete collections of Peonies in the world, as Mr. Hollis had all the well known varieties, together with rare French, English and Japanese sorts and a large number of his own seedlings, which he had been hybridizing. Many of his seedlings had been introduced, others were still unnamed. For the past eight years, I have been endeavoring to accumulate sufficient stock of some of them to offer them for sale; and at the same time make comparisons with other named varieties sent out by Mr. Hollis.

Mr. Hollis passed away four years before I acquired his collection so some of the labels had been lost; where there were several lots of one variety, I found different names for what appeared to be the same variety. I still have many of his choicest, that

I am not sufficiently sure of their being true or have in too limited quantity to offer in this catalog; but hope to offer them in the near future, as soon as comparisons can be made, and stock accumulated.

All varieties originated by Mr. Hollis offered herein are to the best of my knowledge true to name, and meet comparisons with others purchased from Mr. Hollis and the descriptions published by the Cornell University Bulletins, where a large number of his varieties were donated for the experimental garden of the American Society.

You may be interested also in the Irises, Tulips, Hyacinths, Crocus and Narcissus offered herein, all of which can be shipped and planted this Fall. Should any of them fail to grow, I will appreciate it if you will advise me, as I want everything I send you to grow and give you good results.

I assure you I will take as much pains in the future as in the past, to send out nothing but first-class stock, and to continue the same prompt, liberal and conscientious dealings. Hoping to receive a share of your orders this Fall, I am,

Respectfully yours,

J. K. ALEXANDER.

July 1, 1923



SINGLE PEONIES

Peonies

The Peonies are among the noblest and most magnificent of our herbaceous plants. They are the "Queen of Spring Flowers," and are well adapted for massing in beds, and particularly valuable for planting in groups throughout the perennial or shrubbery border, where their brilliant hues add beauty to the entire surroundings. Their requirements are so simple,—a good, rich, deep soil; they are perfectly hardy, and produce their wealth of flowers in great abundance.

TIME TO PLANT: Peonies may be planted with perfect safety any time from the middle of August till the ground freezes in the Fall, and in the early Spring until growth has advanced too far. September is the best time, as they then make a root growth before Winter sets in, usually blooming the following Spring.

After being transplanted, Peonies will not produce typical blooms the first season, many fine double varieties throwing single or semi-double flowers, and it is not until the third year that the finest flowers are produced.

They will abundantly repay good care and nourishment; but they resent an over abundance of fresh manure too near the roots. Well decayed manure is far better. A division of the clumps at long intervals, when they become so crowded as to interfere with freedom of bloom; and the soil kept loose and free from weeds, is all that is necessary. Where grown for cut flowers, they should not be disturbed oftener than is necessary; where they are grown for the sale of roots, they may be divided every second or third year. Plant so the eyes will be from two to three inches below the surface. Lay roots flat. Do not stand them on ends.

My prices are for good strong roots that, planted in the fall, and given proper care, may reasonably be expected to bloom the following Spring. Varieties differ so greatly in habit, that the expressions one-year and two-year, or the number of eyes, convey no meaning whatever; a strong root with one eye often being far better than a weak one with many. My prices are as low as the true varieties, and the size of the roots I send out will warrant. I grow and sell my own roots, and make no pretense of competing with those who have no stock of their own; but buy and sell indiscriminately.

All Peonies shipped prepaid to any part of the world at prices given below.

The Famous Hollis Peonies

One each of the 16 varieties for \$75.00 prepaid.

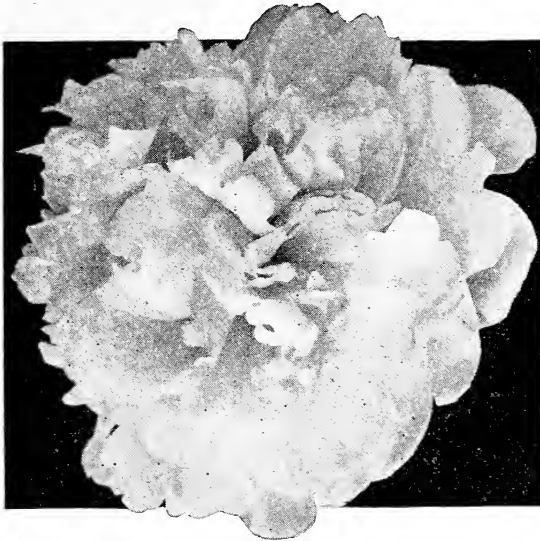
ADMIRAL DEWEY. (Hollis 1903.) Rose-pink, shaded heliotrope; large, high built flower. According to color chart, color, total effect, solferino red, clear; guards solferino red, center same as guards; fades silver tipped, linear petals concealed throughout bloom. Type, bomb. Form of bloom, globular compact. Fragrance pleasant. Blooming time mid-season. \$5.00 each.

ADMIRAL TOGO. (Hollis 1907.) Deepest mahogany red, large high built flower, luminous. According to color chart, total color effect crimson carmine; guards clear, collar same as guards; center clear. Holds color well, no silver tip. Type of bloom semi-rose. Form of bloom flat, medium compact. Not entirely transformed. Plant medium tall, erect, compact. Blooming time mid-season. Medium to large size. \$2.50 each. Recommended.

PEONIES—Continued

ATTRACTION. (Hollis 1906.) One of the very finest of the Japanese type termed "Wonderful Glowing Suns" as they are entirely distinct from the other types, most of them have cup shaped petals which surround a mass of petaloids or filamental petals like a crown of thorns. They are yet comparatively little known to the general public and mostly found in large collections of connoisseurs and Peony enthusiasts, where they awaken the admiration of all who behold them for the first time. Very large, medium compact, flat blossom. General impression, crimson pink with golden center, but according to color chart, the guards are clear tyrian rose, center same color as guards, tipped with yellow, which fades more quickly than guards. Pleasant fragrance. Growth strong and healthy, plants erect, medium to tall. \$2.00 each. Recommended.

BEAUTY'S MASK. (Hollis 1904.) (See illustration.) A very distinctive crown type blossom, of compact formation and very large size. First impression blush white, tinted lilac. According to color chart the guards are clear violet rose, with collar lighter than guards, and distinctive yellowish secondary stamens present. Fragrance pleasant. Blossoming time late. Growth strong and healthy, plant of medium erect habit, tall and open. Buds borne in clusters. \$3.00 each. (Stock limited.)



BEAUTY'S MASK. \$3.00 each.

EVENING GLOW. (Hollis 1907.) Very large, rose type, flat, medium compact bloom. Hydrangea pink, tipped with white. Imbricated bloom. Fragrance pleasant. Habit medium erect to erect, tall and compact. \$15.00 each. (Stock limited.)

FLASHLIGHT. (Hollis 1906.) A very large globular, medium compact to loose bloom of Japanese type. First impression, a crimson pink with golden center. Not as dark a shade as "Attraction." According to color chart, the total color effect is tyrian rose; guards have light streak, center clear. The center is amber yellow shading pink at base. Compact, erect plants of medium height. Early bloomer. One of the best of this type. \$10.00 each.

GEORGE HOLLIS. (Hollis 1907.) Large, globular rose type. Center is a pale, rose-pink with lilac-white guards. Very late blooming. \$5.00 each.

GEORGE WASHINGTON. (Hollis 1904.) A large flat, loose bloom of semi-rose type. One of the brightest dark crimson red varieties. Guards clear, collar same as guards; center clear, uniform color. Stamens intermingled with petals. Blooming time mid-season. Habit of plant, erect, medium, compact, medium height. Growth strong and healthy. A strikingly brilliant color that always attracts the attention of visitors. \$2.00 each. Recommended.

GOLDMINE. (Hollis 1907.) Japanese type. Flat loose, medium size. Guards tyrian rose, center same as guards, tipped golden yellow. Medium tall, erect variety of good habit. Mid-season. \$10.00 each.

INNOCENCE. (Hollis 1904.) A medium sized flat compact Japanese type bloom. General impression, pale pink guard with golden center. According to color chart, lilac-rose; guards clear, center canary-yellow fading to cream-white, pale pink at base of stamens. Fragrant. Habit of plant, erect, tall compact. Growth strong and healthy. Blooming time mid-season. \$5.00 each.

JOHN HANCOCK. (Hollis 1907.) A very large globular semi-double flower. Its color is one not at all common in Peonies, total effect, being bright rosy magenta, guards streaked light; center clear; secondary stamens absent. Bloom is very noticeably silver tipped. Fragrant. Blooming time mid-season. \$5.00 each.

LUCY E. HOLLIS. (Hollis 1907.) Large flat medium compact; rose type blossom. First impression, pale pink and white. According to color chart, lilac white, guards clear, collar same as guards; center slightly flecked scarlet; secondary stamens present. Center of bloom, shaded to pale lilac rose. Fragrance pleasant. Blooming time very late. Strong, healthy drooping habit; plants of medium height. \$5.00 each.

MARY A LIVERMORE. (Hollis 1907.) One of the most beautiful of the rose type. A very large flat medium compact, not differentiated, and entirely transformed blossom. General impression rose-pink and white. Petals are a beautiful rose-pink, passing to silver and white at the tips. Fragrance pleasant. Blooming time mid-season to late. Plants are medium erect, medium tall to tall, compact Growth strong and healthy. Buds borne in clusters. Highly recommended. \$5.00 each.

MARY BAKER EDDY. (Hollis.) Large, compact, globular rose type. Deep rose-pink with silvery tips. Plants of medium height long strong stems. Mid-season to late. Scarce. \$10.00 each.

MAUD L. RICHARDSON. (Hollis.) Large, flat rose type. Pale lilac-rose center lighter. Fragrant. Blooming time, late. \$3.00 each.

WELCOME GUEST. (Hollis 1904.) One of the very finest of the semi-double Peonies. A very large loose, bright silvery rose, fading to rose-white. Very strong and healthy, with long stem. Plant erect, tall and medium compact. Buds borne in clusters. Very pleasant fragrance. Mid-season. Highly recommended. \$2.00 each.

RECOMMENDED COLLECTION OF THREE CHOICE HOLLIS PEONIES

for \$5.00 prepaid.		Reg.
Name.	Color.	Price.
Admiral Togo.	Deep red.....	\$2.50
George Washington.	Bright red.....	2.00
Welcome Guest.	Silvery pink.....	2.00

\$6.50

Rare and Selected Peonies

This collection of 37 Selected Peonies one of each for \$40.00 prepaid.

ALEXANDER DUMAS. (See illustration.) (Guerin 1862.) Medium sized, light violet-rose crown; has creamy white collar of narrow petals, mingled with wide center petals; fragrant. Medium height, free-bloomer, early mid-season. Good cut flower variety. Recommended. 50 cents each.

AVALANCHE. (Crousse 1886.) Medium to large, fairly compact white crown type, flecked with carmine, with cream white collar. Collar well differentiated. Tuft of short, narrow, cream petals in center of bloom. Occasional carmine splash on outside of guards. Odor pleasant. Plant is a medium strong grower of fair habit. Free bloomer in clusters. Mid-season to late. \$1.00 each.

AUGUSTIN D'HOOR. (Calot 1867.) Same as "Marechal Macmahon." Large, medium compact, showy, bomb type blossom. General impression, dark reddish pink with slight silvery reflex. According to color chart a softer red. Mid-season. Medium tall. \$1.00 each.

BEAUTE FRANCAISE. (Guerin 1850.) A good medium sized, compact, crown type. General impression, pink and white. According to color chart, pale lilac rose and cream white, with prominent carmine flecks on center petals. Strong vigorous plant of rather dwarf habit, strong medium to short stems. Odor pleasant. Blossoms mid-season. 50 cents each.

BERLIOZ. (Crousse 1886.) A large, very beautiful compact rose type blossom. A light carmine-rose or rosy magenta, tipped silver with golden-yellow stamens concealed in bloom. Color is somewhat splashed on tips of petals fading to nearly white. Guards not differentiated, perfect rose type flower. Plant is a medium vigorous grower, stems good length and medium strong, good habit. Mid-season to late. Good showy variety. \$2.00 each. Recommended.

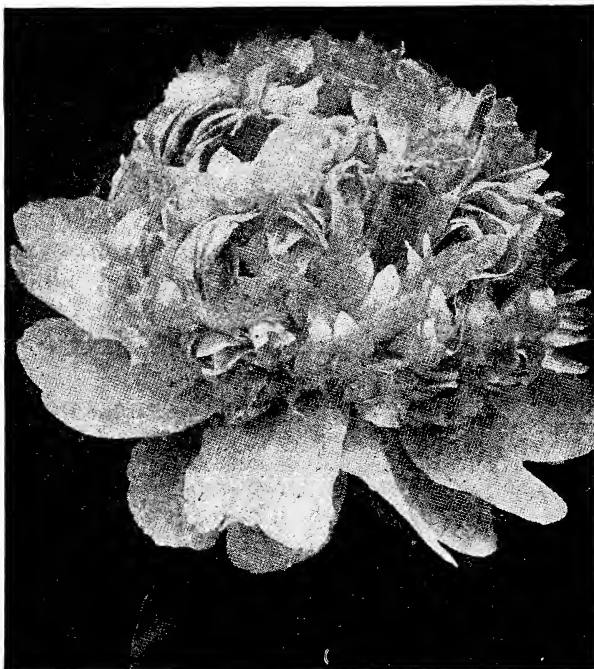
CURIOSITY. (Dessert & Mechin, 1886.) Type bloom anemone. Weak blooms nearly single, while very strong ones may be semi-double. Form of bloom medium globular, compact. Differentiated. Color, total effect violet-red, guards clear, collar same as guards, center clear, with occasional yellow tips. Occasional wide petals appearing in center. Fragrance pleasant, one of the largest of the anemone type. Blooming time mid-season. Habit of plant, erect, tall, medium compact. Blooming habit free. 75 cents each.

DORCHESTER. (Richardson 1870.) Large, compact, rose type. Pale hydrangea-pink. Fragrant. Medium dwarf. Upright, free bloomer. \$1.00 each.

DUC D'WELLINGTON. (Calot 1859.) Large bomb type. White guards, and sulphur yellow center. One of the finest white varieties. Medium tall, vigorous grower, free-flowering. Very fragrant. Mid-season to late. 50 cents each.

DUCHESS DE NEMOURS. (Calot 1856.) Crown type, pure white in color, medium size and fragrant. Early. \$1.00 each.

EDULIS SUPERBA. (Lemoine 1824.) The popular early "Decoration Day" Peony, which is masquerading under all of the following names:



Peony—Alexander Dumas. 50 cents each.
(One-third actual size.)

"Delia," "Edulis Odorato," "Rosa Lilacina," "Mamie Cutler," "Sylvanus," "Glorie de Douai," "Pizano," "Early Rose," "Acanum," "Sainfoin," "Lilacina." Large, loose, flat crown type. Bright deep mauve pink; color mixed with lilac. Large tuft of wide petals same color as guards, surrounding a few narrow petals in extreme center of bloom, prominent collar. Very fragrant. Free-flowering. 50 cents each.

EUGENIE VERDIER. (Calot 1864.) Type of bloom semi-rose. Form of bloom flat, medium compact to loose, not differentiated. Color, total effect hydrangea pink; guards clear; collar lighter than guards, very slight occasional crimson flecks on center. Color fades to lilac white. Fragrance pleasant. Large size. Blossoming time mid-season. \$1.50 each.

FELIX CROUSSE. (Crousse 1881.) Large globular typical bomb type. First impression, brilliant red. According to color chart, tyrian rose. Same color throughout. Compact and globular when first opening; but opens out somewhat with age, exposing linear petals in extreme center of bloom. Odor pleasant. Strong, vigorous grower, with long stem, rather spreading habit, medium height. Free bloomer in clusters. Mid-season. \$1.00 each. Recommended.

FESTIVA MAXIMA. (Mieliez 1851.) Very large globular rose type. Pure white center, prominently flecked crimson; outer petals sometimes faint lilac-white on first opening. Very tall, strong vigorous grower. The most popular white variety for cut-flowers. \$1.00 each. Recommended.

Rare and Selected Peonies—Continued



PEONY—*La Coquette*. 50 cents each.
For description see below.

GOLDEN HARVEST. (Rosenfield 1900.) Bomb type. Guard petals lilac-rose, creamy yellow collar. Blooms in mid-season. \$1.00 each.

KARL ROSENFELD. (Rosenfield 1908.) A very brilliant crimson-scarlet, high built and a first-class bloomer. Tall, strong grower. \$5.00 each.

LA COQUETTE. (1861.) See illustration, this page. Large, globular, high crown. Guards and crown light pink; collar rose-white, center flecked carmine. Strong, erect, medium height, free bloomer. Fragrant. Mid-season. 50 cents each.

LA TULIPE. (Calot 1872.) Synonym "Multicolore." Very large; flat, semi-rose type flower. Lilac, white, outer petals striped with crimson. Fragrant. Tall, strong grower, and free bloomer. Late mid-season. Very attractive. \$1.00 each.

L'INDISPENSABLE. A variety of unknown French origin sent out from Holland, greatly confused with "Eugene Verdier." The two are entirely distinct however, "L'Indispensable" being very much taller, earlier, has differently formed flowers, very full, globular, rose type. Lilac-white, shading to pale violet rose toward the center. Very late, buds slow to open. 50 cents each.

MADAME BOULANGER. (Crousse 1886.) Very large, full bloom of rose type. Glossy soft rose-pink shading to lilac, bordered silvery flesh. Late blossoming. \$3.00 each.

MADAME CALOT. (Miellez, 1856.) Very large, Rose type. Pale hydrangea pink, center shaded darker; collar tinted silver. Fragrance XX. Tall strong grower, free bloomer. Early. 50 cents each.

MADAME CHAUMY. (Calot 1864.) Medium size, globular, very compact, perfect rose type. Satiny rose-pink, or pale lilac-rose, with silver reflex, central petals slightly darker; flecked crimson occasionally. Free bloomer in clusters. Mid-season. 50 cents each.

MADAME DUCEL. (Mechin 1880.) Large, globular, typical bomb type, petals incurving somewhat resembling a Chrysanthemum. Light mauve-rose, with silvery reflex. Fragrant. Mid-season. Foliage very large, dark, green, medium height. \$1.00 each. Recommended.

MADAME EMILE GALLE. (Crousse 1881.) Large, flat rose type of a very delicate sea-shell pink in the center passing to a lighter shade. Late bloomer. An extra fine light variety. \$1.00 each.

MADAME GEISSLER. (Crousse 1880.) Very large, compact, globular, imbricated, rose-type. Violet-rose, tipped silver. Very fragrant, spreading habit. Mid-season. \$3.00 each. Recommended.

MARIE STUART. (Calot 1856.) Crown type. First impression, white. Cream-white, with pale pink guards, center flecked crimson, all fading to white. Guard petals are well differentiated, thick collar of narrow yellowish petals, on young bloom. Good early variety. \$1.00 each.

MILLAIS. (See illustration, page 2.) Single flowers deep crimson with golden-yellow stamens. \$1.00 each.

MONSIEUR BOUCHARLAT AINE. (Calot 1868.) Large, full, compact, semi-rose type. Uniform light violet-rose, with silvery reflex. Very strong erect grower, medium height, free bloomer. Mid-season to late. \$1.00 each.

MONSIEUR DUPONT. (Calot 1872.) Large, flat semi-rose type bloom. Cream to milk-white, petals are intermingled with stamens at all stages of development, but mostly concealed; petals streaked or splashed crimson. Odor pleasant. Free bloomer in clusters. Plant is a strong, tall grower, with a very stout stem, and upright habit. Mid-season to late. Very good. Similar to "Boule de Neige." \$1.00 each. Recommended.

MONSIEUR JULES ELIE. (Crousse 1888.) A very large medium compact, bomb type flower. Total effect, pale lilac rose, guards and center clear, collar tinted lighter than guards. A very attractive pink; base of collar petals amber yellow. Fragrance very pleasant. One of the finest pink varieties grown somewhat resembling a chrysanthemum. Early to mid-season. Habit of plant medium erect, medium height, medium compact. \$1.00 each. Highly recommended.

PETITE RENEE. (Dessert 1899.) Semi-double flowers of deep rose pink, center petals striped white. Midseason. \$1.50 each.

PROLIFERA TRICOLOR. (Lemoine 1825.) Medium size, very loose, white tinted with pink and sulphur-yellow, crown type bloom. Variable plants until well established. When first set the plants are more nearly Japanese or Anemone type. Clearly differentiated bloom; collar of sulphur-yellow petals; crown loose and open, same color as the guards with frequent crimson flecks. Often only a double row of petals forming an open crown, enclosing tuft of narrow sulphur-white petals. Medium height plant, good habit and strong stems. Free bloomer in clusters, making it very showy. \$1.00 each.

QUEEN VICTORIA. (Kelway.) Large, globular in form, medium loose, low crown. Milk-white guards, tinted flesh; center cream-white, with crimson flecks. Very fragrant. Medium height, strong, free-bloomer. Mid-season. Very popular, being one of the best white varieties. 75 cents each. Recommended.

Rare and Selected Peonies—Continued

ROSY DAWN. (Barr.) (See illustration, page 2.) One of the largest Single Peonies, if not the largest. Snow-white flowers, tinged blush at first, resembling a great white water-lily. \$1.00 each.

SARAH BERNHARDT. (Lemoine 1906.) A very large, beautiful flat, imbricated, compact semi-rose type blossom. Flowers of remarkable size and freshness in huge clusters, and of unusual perfection in form. First impression is an apple-blossom pink, with each petal silver tipped. According to color chart, a mauve rose; guards clear collar same as guards, center clear. Pleasant fragrance, late blossoming. Habit of plant, medium erect, tall, medium compact, growth strong. \$5.00 each. Recommended. This vari-

ety should not be confused with Dessert's "Sarah Bernhardt" so-called, as it is entirely different.

SIR THOMAS LIPTON. (Kelway.) Large, loose flat, semi-double flower. A uniform bright rosy crimson, showing the golden-yellow stamens prominently in the center. Pleasant fragrance. Mid-season. Plants of medium height, strong, erect growth, producing their flowers abundantly. \$1.00 each. Recommended.

UMBELATA ROSEA. (Unknown.) Informal rose type. Guards violet-rose shading to amber-white center. Strong upright grower. One of the most popular. 75 cents each.

VENUS. (Kelway 1888.) Rose type, almost white but tinged with shell-pink. Mid-season. Fragrant. Fine for cut flowers. \$1.00 each.



GROUP OF SINGLE PEONIES

Single Peonies

Single Peonies are becoming more and more popular each year, many people considering them more artistic and beautiful than the double ones. They are exceptionally attractive, and not at all common in the garden, making them especially desirable. They are very airy and stand out prominently, producing their blossoms in great abundance.

I have a very choice collection, principally seedlings, possessing the most delicate and rarest shades; but my stock is insufficient for me to offer them under names, therefore, I offer them under color, and at greatly reduced prices.

White shades, and pure white	\$1.00 each.	Crimson shades	50 cents each.
Pale pink and delicate shades	50 cents each.	Pink and white shades	50 cents each.
Deep pink shades	50 cents each.		

Mixed Peonies

Each season, in handling our Peonies, a small amount becomes mixed, many times the very choicest varieties. It does not prove worth while for me to plant these separately, to ascertain their names, so I am offering them at 35 cents each (3 for \$1.00) as long as they last. This mixture is apt to include some of the best new creations not offered in my catalog; and includes both Double and Single varieties.

SPECIAL PEONY OFFER: To give you an opportunity to have a more complete and choice collection of Peonies, I am making the following offer:—

I will ship you Three Choice Peonies for \$5.00, transportation charges prepaid to any part of the United States or Canada. These to be three distinct varieties, that I can recommend to give satisfaction. If you have Peonies and wish different colors from those you now are growing, tell me the colors or the name of the variety if you know it and I will make a selection of varieties that does not include what you have. I will give you as good a selection and variety as possible, using my best judgment, in an effort to please you.

The Iris

Fleur de Lis or Iris Germanica

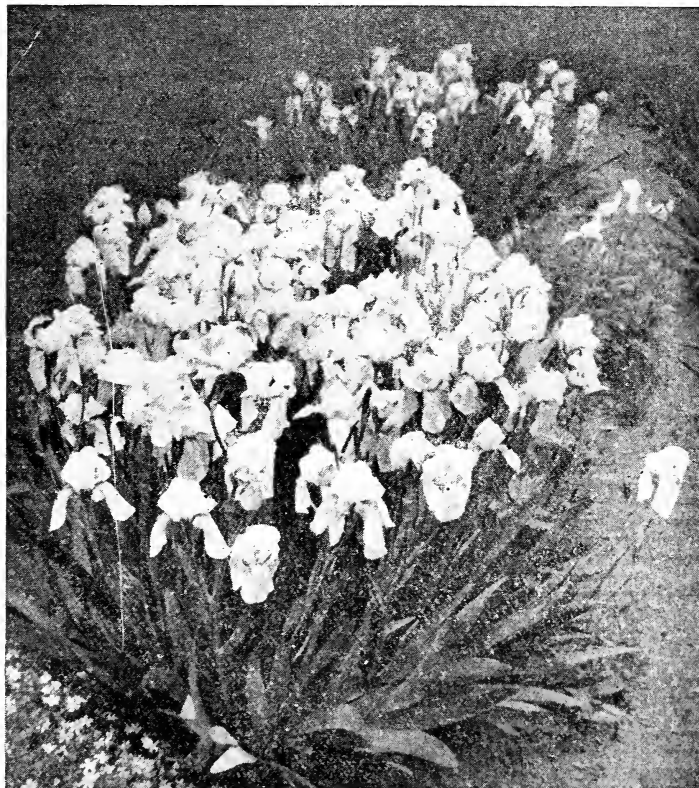
Familiar and well-beloved flowers of Spring. The purity of their beauty and their haunting fragrance is decidedly refreshing. The winsome, modest beauty of some, forming a striking contrast to their more glorious sisters arrayed in a sheen of iridescent splendor. They fairly outrival the Orchid in the wide range of coloring, which includes yellows, from light canary to deep golden; blues from soft lavender to intense purples; reds, from pinkish mauve to claret and maroon; beautiful bronzes, and pure whites; while some varieties are marked and margined in exquisite harmony.

The Iris grows well in any kind of soil. Succeeds in partial shade but gives the most satisfactory results in well drained sunny location. Iris Germanica are perfectly hardy and require only ordinary cultivation; growing luxuriantly but respond quickly to any extra care giving larger and more beautiful flowers. They should be planted in the Fall during August, September and October. Plant the bud or crown about two inches below the surface, hoe or cultivate frequently for best results.

In the following descriptions Standards signify the three standards (erect, or upright curling petals); Falls—the three falls, or drooping petals.

Iris of Exceptional Merit

These Iris I have selected as the very cream of my entire collection. They are rare, and of pleasing shades. All are unusual colors, and are not found at all commonly grown. I can highly recommend each variety, and the collection as a whole is the best that I can prepare. Excepting a very few of the newest varieties they are the cream of the Iris on the market at this time, every one is a desirable variety, and worthy of a place in the garden of the most particular.



"PRINCESS VICTORIA LOUISE" in foreground.
(See description on this page)

This superb collection of Eleven Wonderful Irises, prepaid to any part of the World for \$4.00.

HER MAJESTY. Very attractive on account of its rich and unusual color. Standards, heliotrope of tissue-like delicacy; inner petals straw and lavender; Falls, light mauve traced with white. A very fine, rich flower. 35 cents each; \$3.50 per dozen.

IRIS KING. Truly properly named, as this variety is a king among iris. Standards rich golden-yellow with shades of fawn; Falls, deep crimson-wine; all petals of peculiar velviness and superb coloring. A magnificent iris. 50 cents each; \$5.00 per dozen.

JACQUESIANA. Syn. CAROLINE de SANSEL and CONSCIENCE. A rare variety with rich velvety shades that are not common in Iris, very large and handsome. Standards, bright, coppery-crimson; Falls, rich maroon. 50 cents each \$5.00 per dozen.

LOHENGRIN. Standards and Falls of catalyea-rose; one of the largest and best of the Irises to my knowledge, and without exception the finest lavender pink shade. 50 cents each; \$5.00 per dozen.

LORD GREY. Clouded rose fawn. A very odd and novel shade, very rare and uncommon among the Irises. 50 cents each; \$5.00 per doz.

LORELEY. Splendid landscape variety, with lemon-yellow, sometimes splashed with purple standards and ultra-marine blue Falls bordered cream and veined white. Mid-season. 50 cents each; \$5.00 per dozen.

MADAME CHEREAU. The pride of the German Iris; a tall, stately, queenly flower. A majestic specimen of entrancing beauty. Standards, white, edged and fringed mauve, interspersed with lilac; inner petals white; Falls, white, edged the same as the Standards. 25 cents each; \$2.50 per dozen.

PALLIDA DALMATICA, or Princess Beatrice. A much desired variety, with strong broad leaves, large plants producing tall, stately, clear lavender flowers. 36 inches in height. Highly recommended. 50 cents each; \$5.00 per doz.

PRINCESS VICTORIA LOUISE. (See illustration above.) An exceptionally good landscape variety, with light yellow standards and plum colored Falls bordered cream. Similar to "Loreley" but in general of slightly lighter colors.

Late mid-season. One of the largest and best. 50 cents each; \$5.00 per dozen.

QUEEN OF MAY. Called by many "The Pink Iris," and a variety that is a favorite everywhere. An early flowering delicate old rose. Tall and stately. 25 cents each; \$2.50 per dozen.

RHEIN NIXE. The largest of its color to my knowledge, and in my estimation one of the very best. Standards, pure white; Falls, deep violet blue, with a white edge. 75 cents each.

General Collection of Iris

I will send this collection of 13 Irises for \$3.00, prepaid.

FLAVESCENS. Standards and Falls, a delicate shade of soft yellow. Very fragrant; fine for massing. 25 cents each; \$2.50 per dozen.

FLORENTINA BLUE. Standards and Falls deep blue. The early flowering blue Iris. Fragrant. 25 cents each; \$2.50 per dozen.

HERANT. Fine for massing or borders. Standards beautiful lavender blue; Falls blue. Very large and tall. Highly recommended. 25 cents each; \$2.50 per dozen. The finest of the blue shades.

HONORABILIS. The popular Iris. Similar to Sans Souci. Standards, beautiful golden yellow; Falls, rich mahogany-brown. 15 cents each; \$1.50 per dozen.

KHEDIVE. A beautiful soft lavender, with distinct orange beard. 25 cents each; \$2.50 per dozen.

MISS BROUGH. Standards, violet. Falls, dark purple, orange crest. 25 cents each; \$2.50 per dozen.

MONS DU SIBLE. Standards, lilac. Falls, deep crimson-purple, very showy. 25 cents each; \$2.50 per dozen.

MRS. H. DARWIN. A pure white. Falls slightly reticulated violet. Very beautiful and free-flowering. Recommended. 25 cents each; \$2.50 per dozen.

NEGLECTA. Standards pale lavender. Falls purple, reticulated, white. 25 cents each; \$2.50 per dozen.

PALLIDA SPECIOSA or **TURKEY FLAG.** Standards, dark lavender, shaded lighter; Falls, shaded light purple. 25 cents each.

PANCHUREA. Standards, a light, smoky shade; Falls, dull violet red. 25 cents each; \$2.50 per doz.

QUEEN OF THE GYPSIES. Perfectly marvelous blending of colors. Standards smokey or dusky light bronze; Falls, purplish-red. An entirely new color one of the finest to date. 25 cents each; \$2.50 per dozen.

SANS SOUCI or **REBECCA.** Standards canary; base reticulated dove color; Falls, yellow, veined and interlaced with brown fading to light maroon. 25 cents each! \$2.50 per dozen.



COLLECTION OF 5 WINSOME IRISES, PREPAID, FOR \$1.00

- No. 1 FLAVESCENS, soft yellow.
- No. 2 HONORABILIS, yellow and brown.
- No. 3 HER MAJESTY, lavender-pink.

- No. 4 MRS. H. DARWIN, white edged violet.
- No. 5 HERANT. Large lavender blue.
- No. 6 FLORENTINA BLUE. Deep blue.

Japanese Iris - *Iris Kaempferi*

The Japanese Iris is without doubt the king of all Irises. If grown in a favorable location the flowers will attain a size of from eight to twelve inches across and stand over four feet from the ground.

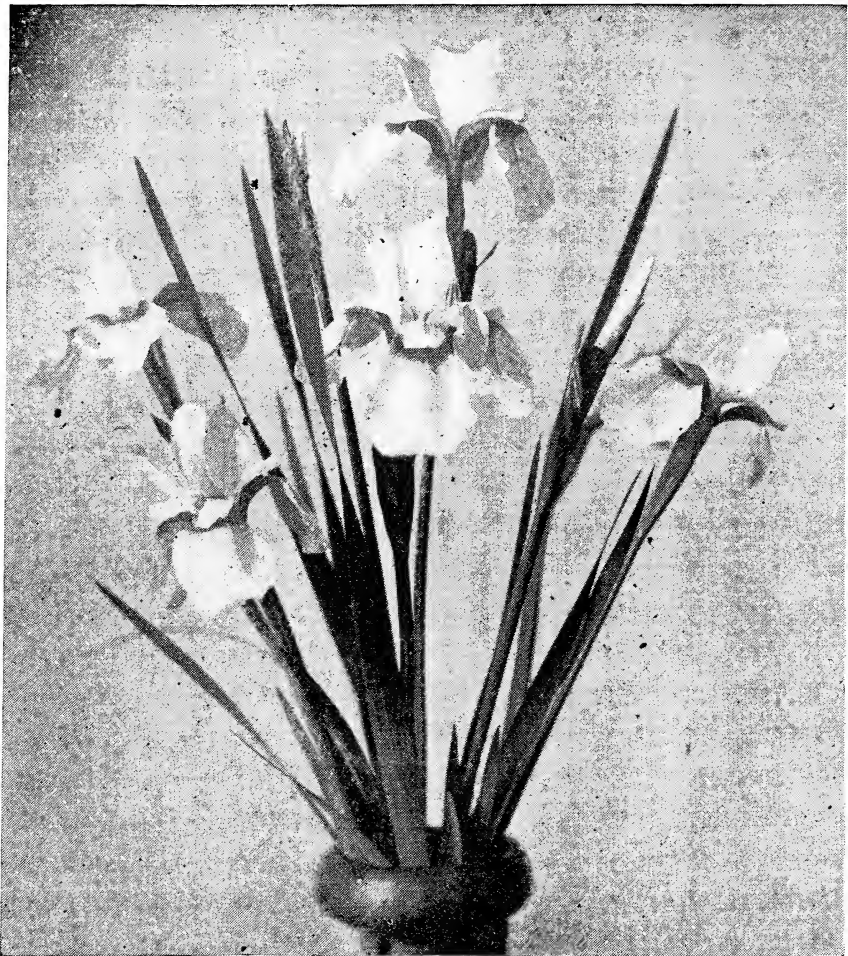
They should be planted in a location that has plenty of moisture but which is well drained, especially in winter. Standing water during the winter months will probably kill the plants. They should be planted in the spring or early fall and if properly planted and cared for will give excellent results the following season.

They start blooming the last of June just at a time when cut flowers are most appreciated in the garden, and continue for about six weeks. When used for cut flowers they should be cut in the bud and allowed to open in water.

Order by name or number.

I will send this complete collection of 25 Japanese Iris for \$25.00 prepaid.

- | | |
|---|--|
| No.
3. OTOMENEWOODE. Three petals. Early bloomer. Falls and standards royal purple. 35 cents each.
5. SUIN. Six petals. Mid-season. Creamy white throughout, strong grower with several flowers on a stalk. \$2.00 each.
11. YEZONISHITAI. Three petals. Early. Red-lavender shaded purple veined white, yellow blotch. 50 cents each.
15. AMISKOOKI. Six petals. Late. Plain white. \$1.00 each.
20. CHOISEDEN. Six petals. Early. White, bordered light crimson-rose. \$1.00 each.
31. WASI-BANRI. Three petals. Early. Falls, white ground, lined purple with central yellow bar. Standards purple and white. 50 cents each.
35. UJI-NO-SATO. Three petals. Blue-lavender Falls penciled white; Standards, same. 50 cents each.
36. TSURO-NO-KEGOROMO. Three petals. Mid-season. Pure white with yellow blotch. Very large flower. 50 cents each.
41. GOLD-BOUND. Six petals. Mid-season. Large, showy pure white with gold-banded center. \$1.00 each.
43. PYRAMID. Six petals. Late. Light violet-blue with narrow white veins. \$1.00 each.
56. ASAGIRE. Six petals. Late. Variegated blue and white. \$1.00 each.
57. GENJIYAMA. Six petals. Rich, dark purple, long orange blotch with blue halo. \$1.00 each.
82. YUIUKO. Three petals. Early. Very large, pure white. 50 cents each.
92. SUIBYIN. Three petals. Late. Falls lilac shaded dark pink. Standards pinkish white. 50 cents each.
93. SHIINOYUKI. Three petals. Early. Falls, dark purple veined white; petaloid-stamens light lavender orange bar. \$1.00 each. | 95. TSUTSUIZUTSU. Six petals. Violet-blue, with large orange blotch. Double as a rose. \$5.00 each.
96. RENJONOTAMA. Six petals. Late. Standards and Falls white margined lilac. \$1.00 each.
97. YUKINOSORA. Six petals. Mid-season. Standards and Falls purple; Stamens, white tipped lavender. \$1.00 each.
98. GINGYOKU. Three petals. Early. Pure white with orange bar. 35 cents each.
110. RISH-NO-TAMI. Six petals. Late. Falls, light ground veined and splashed violet; dark violet stamens. \$1.00 each.
112. SHICHIUKWA. Three petals. Mid-season. Falls, dark plum-purple with yellow center bar and white halo radiating white lines. White Petaloids. 50 cents each.
116. TSURIGI. Six petals. Late. Reddish maroon with yellow bar. Distinctive color. \$3.00 each.
118. MANADZURA. Six petals. White closely veined with blue. \$1.00 each.
120. KUMO-NO-UYE. Six petals. Late. Deep purple with yellow center set in sky-blue field. \$5.00 each.
131. TUJI-NO-HOTARU. Six petals. Late. Dark purple-brown overlaid with light blue. \$2.00 each. |
|---|--|
- I will send this collection of 5 selected Japanese Iris for \$5.00 prepaid.
- | |
|---|
| 18. KYODASAN. Six purple-blue petals, center white, yellow blotch radiating into white field. 50 cents each.
24. YEDO-JIMIN. Three dark plum falls, chrome-yellow center dash, light rose stands. \$3.00 each.
26. KASUGANO. Six plum-purple petals white center, white pencilings. 75 cents each.
40. FANA-AOI. Six lavender-grey falls with yellow throat-bar set in purple field. Stamens violet. \$1.00 each.
117. BLUEBIRD. A large single sky-blue flower. Strong bloomer and most attractive. \$1.00 each. |
|---|



SIBERIAN IRIS: "SIBERICA ALBA"
25 cents each; \$2.50 per doz. See below for description.

Siberian Iris

page one.) Rich blue flowers of exquisite beauty.
25 cents each; \$2.50 per dozen.
SIBERICA ALBA. (See illustration above.) Si-

berian White. A beautiful white flower. 25
cents each; \$2.50 per dozen.
SIBERICA. (Siberian Blue.) (See illustration,

SPECIAL IRIS OFFER:—To give my friends and customers an opportunity to have a more complete collection of these early blossoming favorites, I am making the following offer:—

I will ship you Five Choice Named Varieties of Iris for \$1.00, transportation charges prepaid to any part of the United States or Canada. If you have Irises, and wish different varieties from those you are growing, tell me the color and name if you know it, and I will make a selection of varieties that does not include what you have, which will give you five new colors. In making this selection, I will use my best judgment, giving you the greatest variety of colors possible, and varieties I believe will give you satisfaction.

Tulips for Bedding

The Tulips are universal favorites; the most popular and attractive for early Spring display in the garden or for Winter blooming in the house or conservatory. Tulips can be used in many places in the garden, if one wishes to get the most out of them.

Bold masses of one, two or three solid colors are well known and prove one of the showiest and most attractive ways of growing these "Queen of Spring Flowers." In groups, several of one color together, they are very effective, especially along the hardy border, or in beds that will later bloom with Summer colors. It is best to avoid the one-flower spotty effect, as masses of one color make a far more satisfactory showing. For April and May the Tulip adds just the needed bit of color to brighten the entire lawn.

For Spring flowers, plant bulbs outside in October and November. The soil should be thoroughly dug over, and a liberal supply of well rotted manure applied. Fertilizer is also good. For best effect, when planting in small clumps, the bulbs should be set four inches deep and four inches apart, but in large beds or borders a distance of five or six inches between the bulbs can be allowed.

Shipped prepaid to any part of United States or Canada at prices quoted.

Single Early Tulips

One each of the 9 Single Early Tulips listed below for 50 cents prepaid. 3 of each for \$1.50, 6 of each for \$2.50 prepaid.

Single Early Tulips should be planted about 5 inches deep and from 5 to 6 inches apart. To obtain the best results, both when forcing and when planting in your garden, the very finest select quality, heaviest top-size bulbs should be used.

It is this very scarce quality of bulbs that we furnish exclusively and upon such quality our prices have been based.

ARTUS. A large brilliant flower of dazzling scarlet. Splendid for out of door planting in mass or groups where it is very showy. Early flowering, dwarf grower. 50 cents for 10; \$4.00 per 100.

CHRYSOLORA. A large and extra fine pure golden yellow Tulip; desirable for bedding with red and white sorts. Superior to the popularly grown "Canary Bird." Medium height. Early. 50 cents for 10; \$3.00 per 100.

COULEUR DE CARDINAL. A warm red Tulip with a plum-colored bloom on the outer petals. Handsome, globular form and a strong stem that makes it particularly fine for bedding. Creates a rich effect planted among purple pansies. Its place is essentially in the open where it produces an effect both rich and satisfying. Height, 13 inches. 85 cents for 10; \$7.00 per 100.

COTTAGE MAID. Soft pink, suffused with white. 50 cents for 10; \$4.00 per 100.

KEIZERKROON. Of a glorious and attractive blending of colors. Scarlet red with broad yellow margin. Large flower that is well formed, and proves to be one of the showiest. A strong sturdy grower and one of the finest tall varieties for bedding. Early to blossom. A favorite everywhere. 50 cents for 10; \$4.00 per 100.

LADY BOREEL or **White Joost van Vondel.** Best pure white Tulip, exceedingly fine large flower. Medium height, early. 60 cents for 10; \$4.50 per 100.

POTTEBAKKER SCARLET. Tall early bright scarlet with yellow center. 60 cents for 10; \$5.00 per 100.

ROSE GRIS-DE-LIN. A beautiful and useful variety. White shaded with delicate pink. 50 cents for 10; \$3.50 per 100.

YELLOW PRINCE. Golden-orange yellow; the best of the low-growing yellow Tulips; sweet-scented. 50 cents for 10; \$3.50 per 100.

Selected Double Early Tulips

With few exceptions the Double Tulips should be used for bedding only, as they do not force so well as the single varieties. While the Double Tulips may not be quite so effective as the single sorts, the flowers are more durable, and, as they bloom later, they prolong the flowering period.

Usually it is advisable to use only one variety of Double Tulips in a bed, rather than to combine them as with the Single Tulips. Beds of different varieties can usually be arranged within a few feet of each other, thus permitting the characteristics of each variety to stand out distinctly, and also to give the effect of one large bed of double flowers.

One each of the Five Selected Double Tulips shipped prepaid for 25 cents. Three of each for 75 cents.

ALBA MAXIMA. Flower-stems of medium length surmounted by pure white blooms. 50 cents for 10; \$4.00 per 100.

COURONNE D'OR. A magnificent full, deep golden-yellow slightly shaded orange. An exceptionally good bedding variety and splendid for forcing and cutting. Height, 11 inches. 60 cents for 10; \$5.00 per 100.

MURILLO. An exquisite soft pink, with white markings. Makes beautiful beds and is the most easily forced. Height, 11 inches. 50 cents for 10; \$3.50 per 100.

RUBRA MAXIMA. A large brilliant deep red, of good habit. Exceptionally strong and sturdy grower, flowers last a long time prolonging the blooming period. The best variety for long narrow beds or borders. 50 cents for 10; \$4.00 per 100.

TITIAN. A most unusual blending of cardinal-red and rare yellow tones. Brilliant, sturdy variety for outdoor planting. Height 10 inches. 50 cents for 10; \$4.00 per 100.

Tulip Mixtures

SINGLE EARLY TULIPS. Finest mixture. 35 cents for 10; \$3.00 per 100.

DOUBLE EARLY TULIPS. Finest mixture. 40 cents for 10; \$3.50 per 100.

BEAUTIFUL DARWIN RAINBOW MIXTURE. 40 cents for 10; \$3.50 per 100.

Giant Darwin Tulips

The Twelve Finest Darwins in Cultivation

The late flowering Darwin Tulip has outclassed all its predecessors in type style, and beauty, and is at the present time the Queen of the Tulip family. It attains a height of two to three feet, with strong heavy foliage erect and robust stems, terminating in large and massive flowers. The colors range from palest lilac to purplish black, including shades of rose, scarlet, crimson-violet, brown and white; most of the flowers showing a particular satiny effect. They bloom with the Columbines, three or four weeks after the Single Early Tulips. Clumps of them along the edge of shrubbery and in the hardy plant borders are very effective. They are especially beautiful when cut for vases. The Darwins grow tall, bloom for a long time, and last well as cut-flowers. If planted six to eight inches deep and left undisturbed, will flower for many seasons.

Shipped prepaid to any part of the world at prices below. One each of the Twelve Finest Darwin Tulips listed for 60 cents prepaid.

CLARA BUTT. An exquisite shade of clear pink flushed salmon-rose; a large flower of remarkable beauty. The finest Darwin of its color. 21 inches tall. 50 cents for 10; \$4.00 per 100.

DREAM. A beautiful soft lilac, large flowers of fine form. 26 inches in height. 60 cents for 10; \$4.50 per 100.

FARNCOMBE SANDERS. Fiery rose-scarlet, inside vivid cerise-scarlet with white centre marked blue. Large broad petaled flower of perfect shape. One of the finest sorts, if not the finest of all the reds 25 inches tall. 65 cents for 10; \$5.50 per 100.

GLOW. (Claude Gillot.) Dazzling vermilion-scarlet, white base with blue markings, large flower of excellent shape. Like a large Poppy, it is so brilliant, 23 inches in height. 65 cents for 10; \$5.50 per 100.

LA CANDEUR (Syn., White Queen.) The nearest to a white Darwin. Delicate opalescent tints and effective black anthers. Height, 27 inches. 60 cents for 10; \$4.50 per 100.

MASSACHUSETTS. Vivid pink with white centre. One of the best of its color for beds; splendid form. Height 26 inches. 60 cents for 10; \$5.00 per 100.

PAINTED LADY. Creamy white, faintly tinted soft heliotrope when open. A very beautiful flower resembling a Water Lily. 27 inches in height. 50 cents for 10; \$4.00 per 100.

PRIDE OF HAARLEM. (See illustration.) One of the largest tulips grown, of excellent form and great beauty. In color a brilliant rosy-carmine suffused purplish blue at base. For groups this variety is unsurpassed; both for its glorious color and its stately habit. 28 inches high. 50 cents for 10; \$4.00 per 100.

SIERAAD VAN FLORA. A lovely rosy-red, large flower of fine form. 60c for 10; \$5.00 per 100.

SIR HARRY VEITCH. Rich blood red, blue base; large bold flower. Height 28 inches. 60 cents for 10; \$5.00 per 100.

THE YELLOW DARWIN. (Inglescombe Yellow.) Large globular flowers of canary yellow. A splendid novelty. 26 inches in height. 50 cents for 10; \$4.00 per 100.

WILLIAM COPLAND. Well-formed flowers of a fine lilac tone. The best and finest early forcing Darwin Tulip, and therefore invaluable for cutting. Very fine for the border. Height 23 inches. 60 cents for 10; \$5.00 per 100.

SPECIAL OFFER. I will ship six of each of the Twelve above varieties to your address for \$3.50 prepaid or twelve of each of the Twelve varieties for \$7.00 prepaid.



DARWIN TULIPS

"Pride of Haarlem" in the center, "Queen of Roses" around the outside.



Large-flowering Narcissus "Emperor" one of the best for naturalizing

Narcissi Daffodils and Jonquils

Culture Outside The large-flowered, or the sorts which have large bulbs, should be planted from 4 to 6 inches deep and about 5 inches apart. Planting should be started as soon as possible after October 1st, but bulbs may be planted any time before the ground is frozen too hard to work.

Culture in Pots As a general rule, treat Narcissi the same as Hyacinths. They should be planted about 6 bulbs in a 6-inch pot or pan and put in a dark and cool place where they may develop their roots. Let them remain until January 1st, when they may be removed to a warmer temperature, but kept in the dark until the foliage is about 6 inches high; then bring to the light and allow them to flower.

There is at the present time a very large assortment of Narcissi from which to make selections, and nearly all are of a quality worthy of cultivation. It is almost impossible to list the complete line of these beautiful Spring flowers, but the following few I offer are varieties which I deem will give the best satisfaction.

I recommend the large Double Nosed Bulbs, as they are Mother Bulbs that I can guarantee to bloom. They cost a trifle more, but are twice the value, and I can recommend them as far superior to the ordinary sizes. Bulbs shipped prepaid to any part of the world at prices quoted.

One each of the Seventeen Different Varieties of Narcissi, Daffodils and Jonquils for \$1.50 prepaid.

Six each of the Seventeen varieties for \$8.00 prepaid, or twelve of each for \$15.00.

ALBA PLENA ODORATA. (The familiar Poet Narcissus or Double Jonquil.) Large, double, pure white flowers of delicious fragrance, flowering about Memorial Day. One of the best for borders or for naturalizing. Extra selected double-nosed bulbs. 50 cents for 10; \$4.00 per 100. Strong single-nosed bulbs. 40 cents for 10; \$3.50 per 100.

BARRII CONSPICUUS. A flower of exquisite beauty, unexcelled for cutting; white with large broad spreading perianth; broad, short cup conspicuously edged bright orange scarlet. One of the most popular of the Narcissi. Splendid for borders. 50 cents for 10; \$4.00 per 100.

BICOLOR, VICTORIA. Erect flowers with golden-yellow trumpet and pure white perianth. Flowers large; fine for forcing. Extra heavy double-nosed bulbs. 80 cents for 10; \$7.00 per 100.

BICOLOR, EMPRESS. A new giant variety with immense flowers. Rich yellow trumpet with sulphur-white perianth. This variety and "Emperor" are the most permanent sorts, being splendid for the garden and the best for naturalizing. Extra-heavy, double-nosed bulbs. 80 cents for 10; \$7.00 per 100.

CAMPERNELLE RUGULOSUS. Rich yellow. The largest Jonquil. Splendid for naturalizing. A very beautiful garden variety. Double nosed bulbs. 50 cents for 10; \$4.00 per 100.

EMPEROR. (Ajax Type.) (See above illustration.) New giant variety with immense flowers, often three and one-half inches across. Rich, full, yellow trumpet; deep primrose perianth. Splendid for forcing or outside planting. Extra-heavy, double-nosed bulbs. 80 cents for 10; \$7.00 per 100.

Daffodils and Jonquils—Continued.

GOLDEN SPUR. Another giant variety of rich golden-yellow. Extra large double-nosed bulbs. 80 cents for 10; \$7.00 per 100.

GLORY OF SASSENHEIM. A grand bicolor, Trumpet Narcissus. Very large yellow trumpet, white perianth. A great improvement on Victoria. \$3.00 for 10; \$25.00 per 100.

KING ALFRED. A new gigantic remarkably handsome Daffodil; unrivaled in size and beauty. Exceptionally large, golden yellow flower with deeply frilled mouth; elegantly recurved. Of lasting quality. Selected extra-heavy, double-nosed bulbs. \$3.00 for 10; \$25.00 for 100.

KING EDWARD VII. The very largest form of Poeticus; an exquisite flower of elegance. Snow-white petals; beautifully shaped canary-yellow cup, bordered with orange-red. Fine for forcing and of vigorous growth in the garden. Extra-heavy, double-nosed bulbs. 80 cents for 10; \$7.00 per 100.

LUCIFER. Incomparabilis type. Large, handsome white perianth, cup intense glowing orange-red. An extra fine early forcer. 80 cents for 10; \$7.00 per 100.

MADAME DE GRAAFF. One of the largest and finest in this class; perianth pure white; trumpet very pale primrose, passing into pure white; a refined, delicate flower. Selected Double-nosed bulbs. 80 cents for 10; \$7.00 per 100.

MRS. LANGTRY. A beautiful Single Narcissus of Leedsii type. Remarkable, free-flowering variety; broad crimson perianth, with large white cup, edged bright yellow; very conspicuous. Excellent for mass planting. Extra-heavy, double-nosed bulbs. 50 cents for 10; \$4.00 per 100.

POETICUS ORNATUS. Better than the Poet or Pheasant's Eye Narcissus. Blooms earlier than the others, making it very desirable for Decoration Day. Pure white with orange-red cup; very fragrant. Excellent for cutting; fine for naturalizing. Selected Double-nosed bulbs. 50 cents for 10; \$4.00 per 100.

SINGLE SWEET-SCENTED NARCISSUS JONQUILLA. Yellow free-flowering. 40 cents for 10; \$3.50 per 100. Selected bulbs, 50 cents for 10; \$4.00 for 100.

SIR WATKIN. (Single Narcissus, Incomparable type.) A grand flower; primrose perianth, often five inches across; cup yellow, tinted bright orange, elegantly fringed. Very popular. Extra heavy, double-nosed bulbs. 80 cents for 10; \$7.00 per 100.

VON SION. (The Old-fashioned Double Daffodil.) Flowers deep golden-yellow, very decorative; excellent for cutting. 50 cents for 10; \$4.00 per 100. Selected Extra heavy double-nosed bulbs, 80 cents for 10; \$7.00 per 100.

Bulb Planting Schedule

Number of Bulbs Required for Planting Circular Beds.

Diameter of Bed in feet	3 in. apart	4 in. apart	6 in. apart	8 in. apart
3	127	95	37	
4	217	127	61	37
5	331	225	91	69
6	469	271	127	78
7	631	410	169	96
8	817	469	217	127
9	1027	650	271	156
10	1261	721	331	190
11	1519	940	397	240
12	1801	1027	469	271



Mixed Daffodils

A splendid mixture of many varieties, all suitable for successful naturalization in extra large bulbs, \$1.00 for 25 bulbs; \$3.25 per 100, \$30.00 per 1,000. The price has been made very low, to induce liberal planting of these lovely flowers.

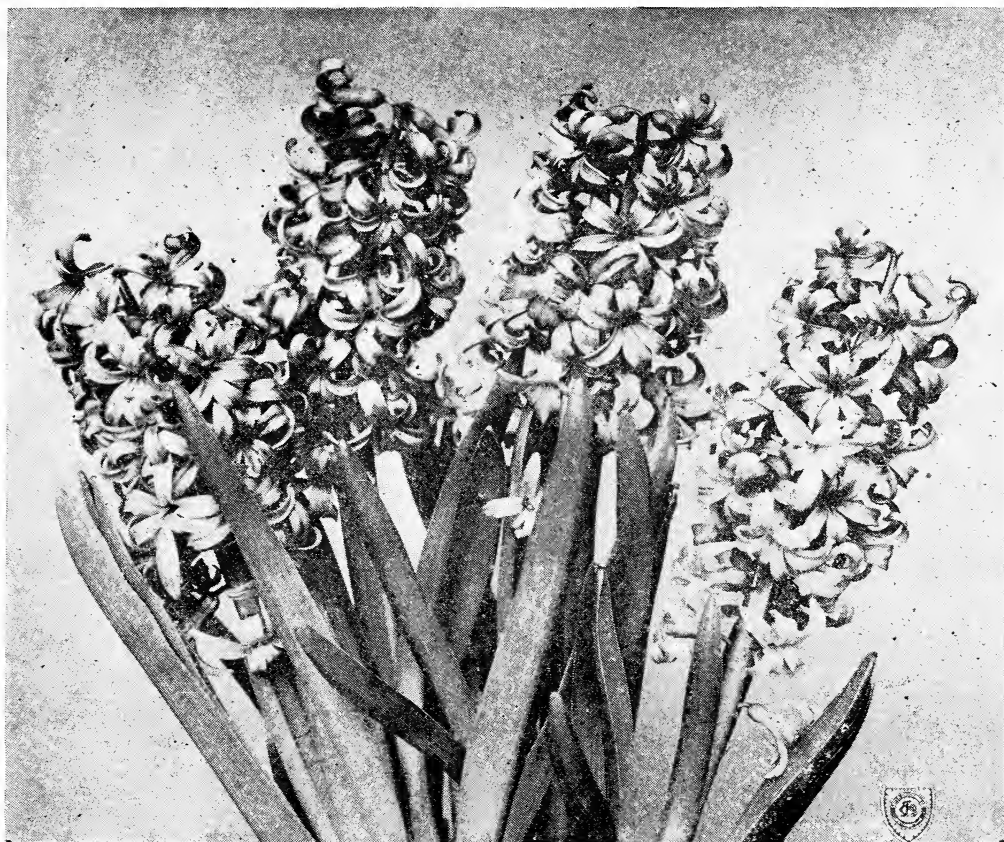
Crocus, Spring-Flowering

"The Heralds of Spring"

Crocuses, among the first flowers to bloom in the early Spring, are always the admiration of everyone, especially when planted amid the grass in lawns, their bright flowers producing a fine contrast. They may also be planted among other Spring-flowering bulbs, such as Tulips, Hyacinths and Narcissi, making a splendid show before the other varieties begin to bloom. The results obtained from planting Crocuses in pots or pans for house blooming are very satisfactory. For this purpose it is advisable to use the best. To grow Crocuses in pots, place the bulbs about one-half inch apart and one-half inch deep, keeping them in a cool place until thoroughly rooted, when they may be brought to the light for blooming. In the open, bulbs should be set at least 3 inches deep.

Choice Mixture of Crocus

The following mixture is well adapted for bedding, naturalizing or planting in conspicuous places in lawns. The colors include a complete selection of all the shades and markings, as well as the self colors, beautiful pure whites, white varieties delicately tinted, pale yellows and golden yellows, all shades of blue and purple, together with striped and variegated varieties. \$0.25 per dozen, \$1.50 per 100, \$12.00 per 1,000. 250 at 1,000 rates.



Specimens produced from Exhibition sized bulbs of Hyacinth "Queen of the Blues."

Hyacinths

The Hyacinth is one of the most popular of the Fall bulbs and commands a place in every home and garden. There is nothing more attractive than a well-grown pan of Hyacinths, with their brilliant colors and delightful fragrance, together with their long keeping qualities and decorative appearance. Hyacinths may be brought to bloom about the latter part of January and if taken into the house at intervals, flowers may be obtained until the middle or latter part of April.

Culture in Pots When potting Hyacinths for growing indoors a medium light, well-enriched soil is best suited, placing some broken crock in the bottom for drainage. Set the bulbs about one-half inch below surface of soil, giving them a thorough watering and put them away in a dark, cold place, so that they will not freeze; water them as often as need be to avoid drying. They should be allowed to remain for at least 12 weeks, or until the pot is well filled with roots, when they may be removed to a warmer location, but still kept dark until a growth of 4 to 5 inches is made, then bring to the light gradually until allowed to flower.

When a repetition of bloom is required, bring out one or more pots every week or ten days from place where allowed to root.

Outdoor Culture Prepare the beds or borders where they are to be planted with well-rotted manure, having it thoroughly dug over to a depth of at least 12 inches, being assured that the soil is well drained to avoid any decay of the bulbs. Plant the bulbs at least 5 inches deep and 6 apart. As soon as the ground begins to freeze, cover the beds with a litter of leaves, straw or pine boughs to a thickness of 6 or 8 inches. This covering should be removed as early as possible after all danger from severe cold weather is past.

Hyacinths under Colors for Bedding

10 cents each, \$1.00 per doz., \$6.00 per 100. Prepaid to any part of United States.

Dark red and Scarlet	Pure White	Light Blue and Lavender	Yellow
Rose and Pink		Dark Blue and Purple	Mixture of Colors

Single Named Hyacinths

20 cents each, \$2.00 for 12; \$3.00 for 25, prepaid to any part of United States.

- My prices are for Exhibition Size bulbs, which produce the finest flowers both in size and quality, and are considered far superior to first, second or third size bulbs offered at lower prices. This grade of bulbs is the best that can be produced, and is considered absolutely the best by all experts.
- CITY OF HAARLEM.** Strong, large truss of bright golden yellow.
- L'INNOCENCE.** Strong truss with large, pure white bells.
- GERTRUDE.** Splendid, dark pink; large, compact spike.
- PERLE BRILLIANT.** Sky blue, tinged lilac; the finest light blue.
- GIGANTEA.** Delicate shade of blush pink; large truss.
- QUEEN OF THE BLUES.** A lovely bright blue.
- SPECIAL OFFER.** One each of the Six above varieties for \$1.00.



Hardy Lilies

HEMERCALLIS. (Yellow Day Lily.)

Popular hardy plants, belonging to the Lily family. They succeed everywhere and should always be included in the border of old-fashioned hardy plants.

From Greek, hemero—day, and kallos—beautiful; because the beautiful blossoms close at night.

One of the most beautiful and popular of our garden perennials. The Lemon Day Lilies have narrow grass-like foliage, and the flowers have wide funnels. Small plants will flower freely the first year. The plants are all remarkably free from enemies and need no protection even in the severest winters. The flowers are very simple, yet distinct, with a wholesome fragrance. The individual flowers are short-lived, but there is a good succession. They thrive in almost any garden soil, but are most luxuriant along the borders of ponds or moist places, and in partial shade. Excellent for cutting, lasting a long while, and the most backward buds opening in water.

Our stock of Hemerocallis is field-grown, and can be depended upon to be true to name.

APRICOT. Rich apricot colored flowers. Plants grow 2½ feet tall. 25 cents each; \$2.50 per dozen.

AURANTICA. (Carolina Lily.) A beautiful, large trumpet-shaped Day Lily with fragrant orange flowers. One of the most satisfactory; height 2 to 3 feet; flowers in June and July. 35 cents each; \$3.50 per dozen.

FLAVA. (Yellow Day Lily.) The best known variety; very fragrant, deep clear lemon-yellow; flowers in June; height, 2 to 3 feet. 25 cents each; \$2.50 per dozen.

FULVA. (Tawny Day Lily.) One of the most common varieties. Height, 4 to 5 feet; trumpet-shaped flowers of a bronzy orange-red color; flowers from June to August. 25 cents each; \$2.50 per dozen. One each of the above four varieties for \$1.00 prepaid.

FUNKIA. (Plantain Lily.)

FUNKIA—Plantain Lily. The Plantain Lilies are among the easiest plants to manage; their broad, massive foliage makes them attractive subjects for the border, even when not in flower. Lavender-blue blossoms in July, August and September. They succeed equally well in sun or shade. 20 cents each; \$2.00 per dozen.

TRADESCANTIA. (Spiderwort.)

TRADESCANTIA ALBA. An all-round plant for wet or dry, sunny or shady situations, continuing in bloom from early summer until frost. Pure white, three-petaled flowers in clusters on long stems, and long, pointed foliage. Height 2 feet. 25 cents each; \$2.50 per dozen.

YUCCA. (Adam's Needle.)

YUCCA FILAMENTOSA. A stately foliage and flowering plant equally imposing in solitary or group planting; always conspicuous. The broad, sword-like foliage is evergreen, while in mid-summer it shows great erect, branching stems, bearing a showy display of pendant, creamy white bells. Very fragrant; flowers in July and August. 35 cents each; \$3.50 per dozen; large plants, \$1.00 each, prepaid.



DAHLIA LABELS.

Dahlia Labels, Painted, with Wires—3½ inch, iron wire; 75 cents per 100, prepaid; \$3.00 per 1,000, prepaid. 3½-inch, copper wire, \$1.00 per 100, prepaid; \$4.00 per 1,000, prepaid.

Dahlia Labels, Plain, with Wires—3½ inch, iron wire, 5 cents per 100, prepaid; \$2.00 per 1,000, prepaid. 3½-inch, copper wire. 75 cents per 100 prepaid; 2.50 per 1,000.

WOODEN PLANT LABELS.

For any kinds of plants. These are plain labels to be used either in pots or out of doors, with one end pointed. I am also offering Dahlia labels which are suitable for labeling all kinds of Dahlias.

Plant Labels—4 inch, plain, 50 cents per 100, prepaid; \$2.00 per 1,000, prepaid. 5-inch, plain, 55 cents per 100, prepaid; \$2.50 per 1,000, prepaid. 6-inch, plain, 60 cents per 100, prepaid; \$2.75 per 1,000, prepaid.

YOUR INVITATION

You are most cordially invited to visit my gardens during the flowering season while my Iris, Peonies, Phlox, Gladioli and Dahlias are in blossom, and I assure you a hearty welcome.

German Iris are in blossom from June 1st to July 15th.

Japanese Iris from July 1st to August 5th.

Peonies from June 10th to July 10th.

Phlox from July 1st to August 1st.

Gladioli from August 1st until killed by frost.

Dahlias from August 15th until killed by frost.

Imagine the pleasure in walking through my fifty-acre garden, where you can enjoy seeing 3,000 varieties of Dahlias, two acres of Peonies, 150,000 Gladioli, 75 varieties of Iris, and a select collection of Hardy Perennials that are favorites in the old-fashioned garden.

In addition you will see my Ornamental Shrubs, Hedge Plants and Evergreens.

Very cordially yours,

J. K. ALEXANDER,
The Dahlia King

East Bridgewater, Mass.

Visitors Welcome Seven Days a Week

Auto Drive Thru My Garden

J. K. Alexander



PEONY—La Coquette. \$1.00 each. For Description see page 6.

East Bridgewater, Massachusetts